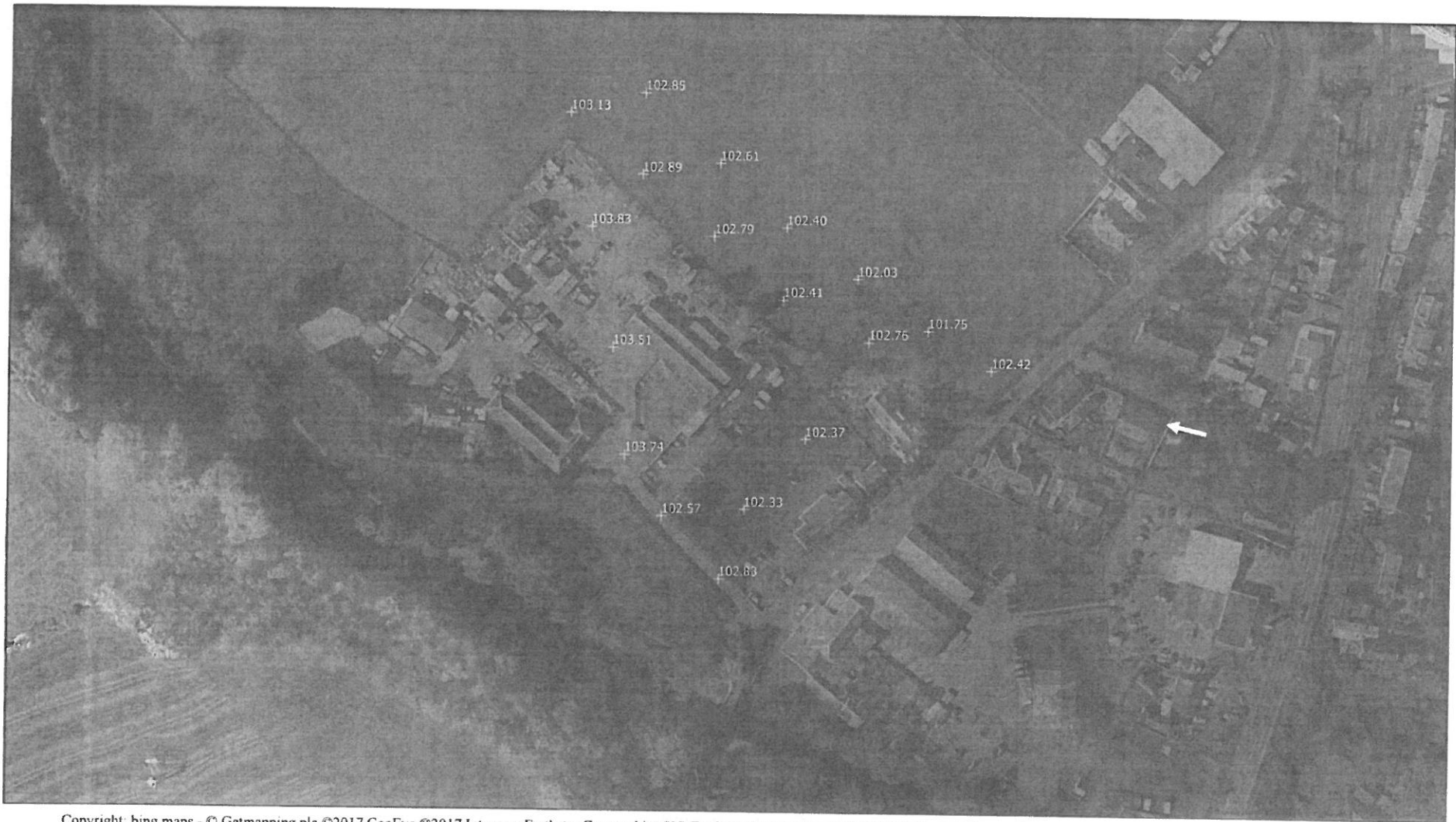



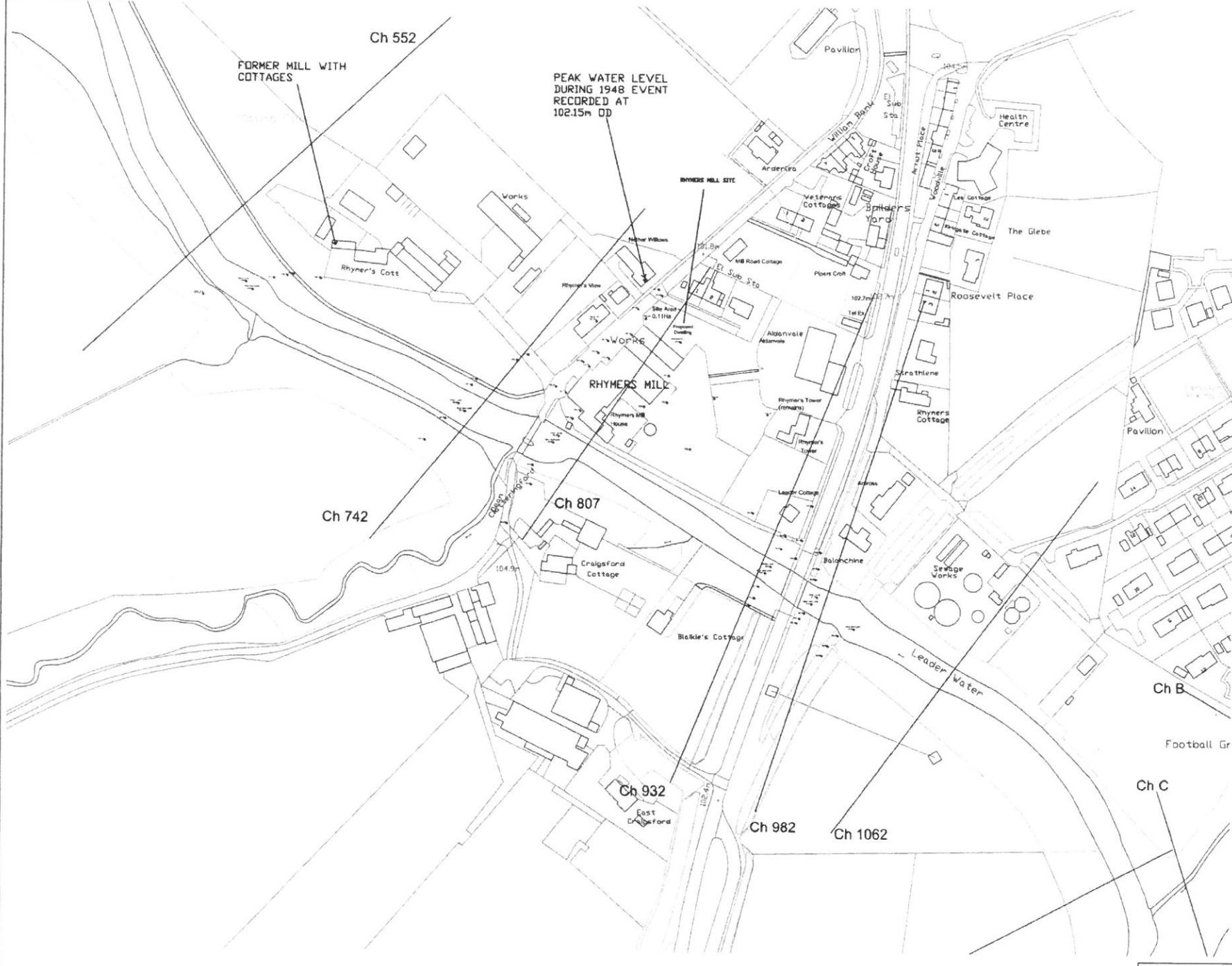
APPENDIX



Copyright: bing maps - © Getmapping plc ©2017 GeoEye ©2017 Intermap Earthstar Geographics SIO Earthstar Geographics SIO ©2017 Microsoft Corporation

| | | | |
|---------------------------------------------------------------|------------------------------------------------------------------------|-----------------------------------------------------------------------------------------------------------------------------------|---------------------------------------------------------------------------------------|
| Client: Austin Travel | Figure Title: Aerial Photography Derived 5m DTM Spot Height Plan | Prospect Business Centre, Hamilton International Park, Stanley Boulevard, Hamilton, G72 0BN Tel: 01698 822 533 |  |
| Project: Rhymers Mill, Earlston – Flood Risk Assessment | Figure A | | |
| Date: 7 th April 2017 | | DO NOT SCALE | |
| Grid Ref: NT 57114 38223 | | | |
| SCALE: N.T.S. | | | |

DO NOT SCALE



- LEGEND**
- SITE BOUNDARY
 - Ch 285 MODEL CROSS SECTION
 - SPOT HEIGHT TO ORDNANCE DATUM (ADJUSTED FROM TBM BY AITKEN TURNBULL)

| No | Description | By | App | Date |
|----|-------------|----|-----|------|
| | | | | |



Terrenus Land & Water Ltd
 Prospect Business Centre,
 Hamilton International Park,
 G72 0BN
 www.terrenus.co.uk

Client
 AUSTIN TRAVEL

Project
 RHYMERS MILL,
 EARLSTON

Drawing Title
 SITE DETAIL

| | | |
|---------------|--------------|--------------|
| Drawn DA | Checked V/H | Approved V/H |
| Date 07-04-17 | 1601-205-003 | |
| Scale NTS | | |

ORIGINAL A3

Job No: 1601-205
Table A - FRA Model Outputs

| | | Peak Water Level (mOD) for Existing Ground Levels | | | | | | Overland flood routing activation level | Comments |
|--------------|------|-----------------------------------------------------|---------------------------------------|------------------------------------------------|-------------------------------------------------------|--------------------------------------------------|--------------------------------------------------|-----------------------------------------|------------------------------|
| | | Calibrated Nov'16 (Leader - 95.12m ³ /s) | 1 in 200 year under normal conditions | 1 in 200 year plus 20% under normal conditions | 1 in 200 year with 20% blockage of right hand archway | 1 in 200 year with 10% blockage of both archways | 1 in 200 year with 20% blockage of both archways | | |
| Leader Water | 1 | 0 | 105.29 | 106.49 | 106.68 | 106.49 | 106.49 | 106.49 | |
| | | 165 | 104.92 | 105.85 | 106.00 | 105.85 | 105.85 | 105.85 | |
| | 2 | 330 | 104.25 | 105.02 | 105.15 | 105.02 | 105.02 | 105.02 | |
| | | 441 | 103.13 | 104.01 | 104.15 | 104.01 | 104.01 | 104.01 | |
| | 3 | 552 | 102.02 | 103.11 | 103.30 | 103.14 | 103.14 | 103.19 | 103.13 |
| | 4* | 742 | 100.77 | 101.76 | 102.11 | 102.16 | 102.17 | 102.57 | 102 |
| | 4a | 760 | 100.84 | 101.91 | 102.46 | 102.23 | 102.23 | 102.58 | 102 |
| | 5a | 790 | 99.60 | 101.40 | 101.65 | 101.40 | 101.40 | 101.40 | 102 |
| | 5* | 807 | 99.49 | 101.25 | 101.49 | 101.25 | 101.25 | 101.25 | 100.7 |
| | 6 | 932 | 99.24 | 100.76 | 100.85 | 100.76 | 100.76 | 100.76 | |
| | 6a | 945 | 99.00 | 100.62 | 100.89 | 100.62 | 100.62 | 100.62 | |
| | 7a | 965 | 98.95 | 100.41 | 100.67 | 100.40 | 100.40 | 100.41 | |
| | 7 | 982 | 98.88 | 100.34 | 100.60 | 100.34 | 100.33 | 100.34 | |
| | 8 | 1062 | 97.21 | 99.15 | 99.43 | 99.15 | 99.15 | 99.15 | |
| | 9 | 1222 | 97.00 | 98.97 | 99.24 | 98.97 | 98.97 | 98.97 | |
| | | 1252 | 96.96 | 98.94 | 99.21 | 98.94 | 98.94 | 98.94 | |
| | | 1252 | 96.96 | 98.94 | 99.21 | 98.94 | 98.94 | 98.94 | |
| | | 1382 | 96.79 | 98.77 | 99.04 | 98.77 | 98.76 | 98.76 | |
| | 10 | 1512 | 96.61 | 98.55 | 98.84 | 98.55 | 98.55 | 98.55 | |
| | | 1684 | 96.29 | 98.11 | 98.43 | 98.11 | 98.11 | 98.11 | |
| | 1857 | 95.77 | 97.34 | 97.65 | 97.34 | 97.34 | 97.34 | | |
| Turford Burn | A | 0 | 100.55 | 100.55 | 100.61 | 100.55 | 100.55 | 100.55 | |
| | B | 200 | 98.05 | 98.94 | 99.21 | 98.94 | 98.94 | 98.94 | |
| | C | 320 | 96.96 | 98.94 | 99.21 | 98.94 | 98.94 | 98.94 | Confluence with Leader Water |

Key:

- No activation of possible overland flood routing pathways
- 0.01m - 0.3m or greater water depth possible for activation of overland flood routing
- 0.3m or greater water depth possible for activation of overland flood routing